



MARMEL BEAUTY ACADEMY, INC
 6444 Bellingham Ave, North Hollywood, Ca 91606 | (818) 617-2717 |
 www.marmelbeauty.com

**SCHOOL PERFORMANCE FACT SHEET
 CALENDAR YEARS 2020 & 2021**

Esthetician – 600 Hours

On-Time Completion Rates (Graduation Rates)

Includes data for the two calendar years prior to reporting.

Calendar Year	Number of Students Who Began the Program	Students Available for Graduation	Number of On-Time Graduates	On-Time Completion Rate
2020	15	15	0	0%
2021	32	32	20	63%

Student's Initials: _____ Date: _____

Initial only after you have had sufficient time to read and understand the information.

Students Completing Within 150% of the Published Program Length

Calendar Year	Number of Students Who Began the Program	Students Available for Graduation	150% Graduates	150% Completion Rate
2020	15	15	0	0%
2021	32	32	9	28%

**Included if the program is more than one year in length.

Student's Initials: _____ Date: _____

Initial only after you have had sufficient time to read and understand the information.



Job Placement Rates (includes data for the two calendar years prior to reporting)

Calendar Year	Number of Students Who Began Program	Number of Graduates	Graduates Available for Employment	Graduates Employed in the Field	Placement Rate % Employed in the Field
2020	15	14	14	5	36%
2021	32	29	29	14	48%

You may obtain from the institution a list of the employment positions determined to be in the field for which a student received education and training. www.marmelbeauty.com

Gainfully Employed Categories (includes data for the two calendar years prior to reporting)

Part-Time vs. Full-Time Employment

Calendar Year	Graduate Employed in the Field 20-29 Hours Per Week	Graduates Employed in the Field at Least 30 Hours Per Week	Total Graduates Employed in the Field
2020	5	0	5
2021	2	12	14

Single Position vs. Concurrent Aggregated Position

Calendar Year	Graduates Employed in the Field in a Single Position	Graduates Employed in the Field in Concurrent Aggregated Positions	Total Graduates Employed in the Field
2020	5	0	5
2021	14	0	14



Self-Employed / Freelance Positions

Calendar Year	Graduates Employed who are Self-Employed or Working Freelance	Total Graduates Employed in the Field
2020	4	5
2021	6	14

Institutional Employment

Calendar Year	Graduates Employed in the Field who are Employed by the Institution, an Employer Owned by the Institution, or an Employer who Shares Ownership with the Institution.	Total Graduates Employed in the Field
2020	0	5
2021	0	14

Student's Initials: _____ **Date:** _____

Initial only after you have had sufficient time to read and understand the information.

IF the majority of graduates from this program obtain jobs in self-employment or freelance work add:

This program may result in freelance or self-employment.

- The work available to graduates of this program is usually for freelance or self-employment.
- This type of work may not be consistent.
- The period of employment can range from one day to weeks to several months.
- Hours worked in a day or week may be more or less than the traditional 8 hour work day or 40 hour work week.
- You can expect to spend unpaid time expanding your networks, advertising, promoting your services, or honing your skills.
- Once graduates begin to work freelance or are self-employed, they will be asked to provide documentation that they are employed as such so that they may be counted as placed for our job placement records.
- Students initialing this disclosure understand that either a majority or all of this school's graduates are employed in this manner and understand what comprises this work style.

Student's Initials: _____ **Date:** _____

Only initial after you have had sufficient time to read and understand the information.



MARMEL BEAUTY ACADEMY, INC

6444 Bellingham Ave, North Hollywood, Ca 91606 | (818) 617-2717 |
www.marmelbeauty.com

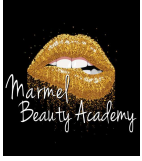
License Examination Passage Rates (includes data for the two calendar years prior to reporting)

Calendar Year	Number of Graduates in Calendar Year	Number of Graduates Taking Exam	Number Who Passed First Available Exam	Number Who Failed First Available Exam	Passage Rate
2020	13	0	0	0	0%
2021	29	18	12	6	67%

Licensure examination passage data is not available from the state agency administering the examination. We are unable to collect data from # graduates.

Student's Initials: _____ Date: _____

Initial only after you have had sufficient time to read and understand the information.



MARMEL BEAUTY ACADEMY, INC

6444 Bellingham Ave, North Hollywood, Ca 91606 | (818) 617-2717 |
www.marmelbeauty.com

Salary and Wage Information (includes data for the two calendar years prior to reporting)

Annual salary and wages reported for graduates employed in the field.

Calendar Year	Graduates Available for Employment	Graduates Employed in Field	\$20,001	\$35,001	\$40,001	\$45,001	No Salary Information Reported
			-	-	-	-	
			\$25,000	\$40,000	\$45,000	\$50,000	
2020	14	5	5	0	0	0	0
2021	29	14	3	3	3	5	0

A list of sources used to substantiate salary disclosures is available from the school. www.marmelbeauty.com

Student's Initials: _____ Date: _____

Initial only after you have had sufficient time to read and understand the information.

Cost of Educational Program

Total charges for the program for students completing on time in 2020: \$7,000
Total charges may be higher for students that do not complete on time.

Total charges for the program for students completing on time in 2021: \$7,000
Total charges may be higher for students that do not complete on time.

Student's Initials: _____ Date: _____

Initial only after you have had sufficient time to read and understand the information.



MARMEL BEAUTY ACADEMY, INC

6444 Bellingham Ave, North Hollywood, Ca 91606 | (818) 617-2717 |
www.marmelbeauty.com

Students at Marmel Beauty Academy are not eligible for federal student loans. This institution does not meet the U.S. Department of Education criteria that would allow its students to participate in federal student aid programs.

Student's Initials: _____ **Date:** _____

Initial only after you have had sufficient time to read and understand the information.

This fact sheet is filed with the Bureau for Private Postsecondary Education. Regardless of any information you may have relating to completion rates, placement rates, starting salaries, or license exam passage rates, this fact sheet contains the information as calculated pursuant to state law.

Any questions a student may have regarding this fact sheet that have not been satisfactorily answered by the institution may be directed to the Bureau for Private Postsecondary Education at 1747 N. Market Blvd, Suite 225, Sacramento, CA 95834, www.bppe.ca.gov, toll-free telephone number (888) 370-7589 or by fax (916) 263-1897.

Student Name - Print

Student Signature

Date

School Official

Date



MARMEL BEAUTY ACADEMY, INC

6444 Bellingham Ave, North Hollywood, Ca 91606 | (818) 617-2717 |

www.marmelbeauty.com

Definitions

- “Number of Students Who Began the Program” means the number of students who began a program who were scheduled to complete the program within 100% of the published program length within the reporting calendar year and excludes all students who cancelled during the cancellation period.
- “Students Available for Graduation” is the number of students who began the program minus the number of students who have died, been incarcerated, or been called to active military duty.
- “Number of On-time Graduates” is the number of students who completed the program within 100% of the published program length within the reporting calendar year.
- “On-time Completion Rate” is the number of on-time graduates divided by the number of students available for graduation.
- “150% Graduates” is the number of students who completed the program within 150% of the program length (includes on-time graduates).
- “150% Completion Rate” is the number of students who completed the program in the reported calendar year within 150% of the published program length, including on-time graduates, divided by the number of students available for graduation.
- “Graduates Available for Employment” means the number of graduates minus the number of graduates unavailable for employment.
- “Graduates Unavailable for Employment” means the graduates who, after graduation, die, become incarcerated, are called to active military duty, are international students that leave the United States or do not have a visa allowing employment in the United States, or are continuing their education in an accredited or bureau-approved postsecondary institution.
- “Graduates Employed in the Field” means graduates who beginning within six months after a student completes the applicable educational program are gainfully employed, whose employment has been reported, and for whom the institution has documented verification of employment. For occupations for which the state requires passing an examination, the six months period begins after the announcement of the examination results for the first examination available after a student completes an applicable educational program.
- “Placement Rate Employed in the Field” is calculated by dividing the number of graduates gainfully employed in the field by the number of graduates available for employment.
- “Number of Graduates Taking Exam” is the number of graduates who took the first available exam in the reported calendar year.
- “First Available Exam Date” is the date for the first available exam after a student completed a program.
- “Passage Rate” is calculated by dividing the number of graduates who passed the exam by the number of graduates who took the reported licensing exam.
- “Number Who Passed First Available Exam” is the number of graduates who took and passed the first available licensing exam after completing the program.
- “Salary” is as reported by graduate or graduate’s employer.
- “No Salary Information Reported” is the number of graduates for whom, after making reasonable attempts, the school was not able to obtain salary information.



MARMEL BEAUTY ACADEMY, INC
6444 Bellingham Ave, North Hollywood, Ca 91606 | (818) 617-2717 |
www.marmelbeauty.com

STUDENT'S RIGHT TO CANCEL

A student has the right to cancel the Enrollment Agreement by written notice and obtain a refund of charges paid through attendance at the first-class session, or the seventh day after enrollment, whichever is later. The school shall refund any amount paid by the student within 45 days after it receives the notice of cancellation. Notice of cancellation may be given by mail, hand delivered, or fax. The notice of cancellation, if sent by mail, is effective when deposited in the mail, properly addressed with postage prepaid. The written notice of cancellation need not take any particular form and however expressed, is effective if it states that the student no longer wishes to be bound by the Agreement.

REFUND POLICY

After the cancellation period, the institution provides a pro rata refund of funds paid for tuition charges to students who have completed 60 percent or less of the period of attendance. Once more than 60 percent of the enrollment period in the entire course has been incurred (including absences), there will be no refund to the student. The registration fee of \$100.00 dollars is a non-refundable item. The STRF fee is non-refundable.

Equipment, books, supplies, tools, uniforms, kits, and all other items issued and received by the student are not returnable. Once received by the student it will belong to the student and will represent a liability to the student.

If the amount you have paid is more than the amount that you owe for the time you were scheduled to attend, then a refund will be made within 45 days of the official withdrawal date.

If the amount that you owe is more than the amount that you have already paid, then you will arrange to pay the amount that you owe to Marmel Beauty Academy Inc.

Official withdrawal date is the student's notification to the School Director or the School's determination.